



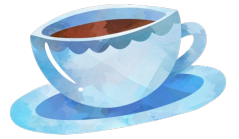
© MINDSTEOGMELLENSTE



© MINDSTEOGMELLENSTE



© MINDSTEOGMELLENSTE



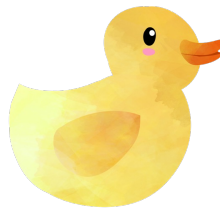
© MINDSTEOGMELLENSTE



© MINDSTEOGMELLENSTE



© MINDSTEOGMELLENSTE



© MINDSTEOGMELLENSTE



© MINDSTEOGMELLENSTE



© MINDSTEOGMELLENSTE



© MINDSTEOGMELLENSTE



© MINDSTEOGMELLENSTE



© MINDSTEOGMELLENSTE



© MINDSTEOGMELLENSTE



© MINDSTEOGMELLENSTE



© MINDSTEOGMELLENSTE



© MINDSTEOGMELLENSTE



© MINDSTEOGMELLENSTE



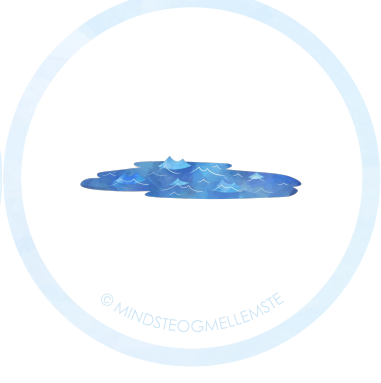
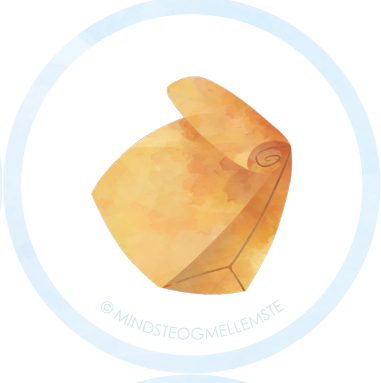
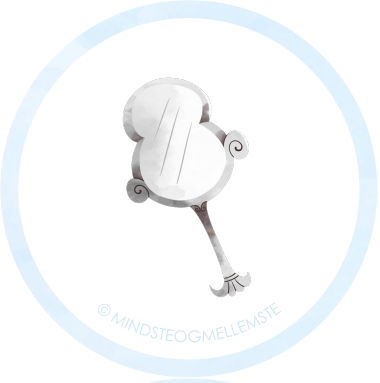
© MINDSTEOGMELLENSTE

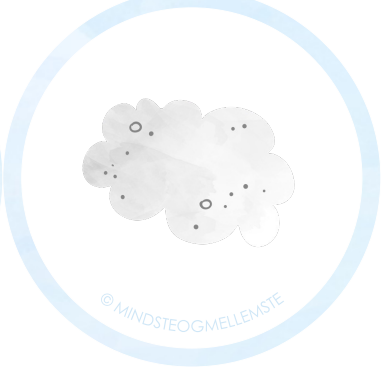
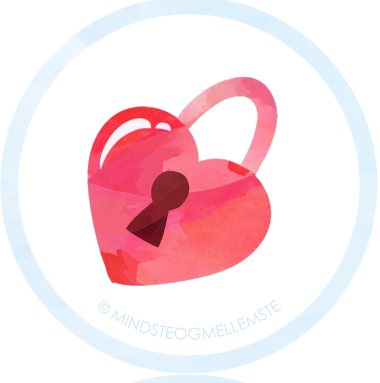
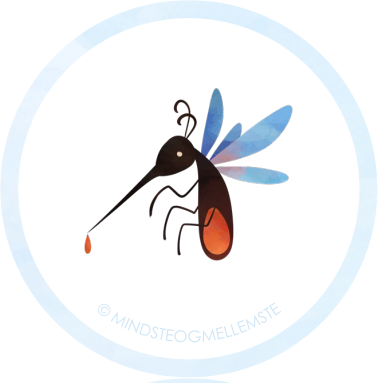
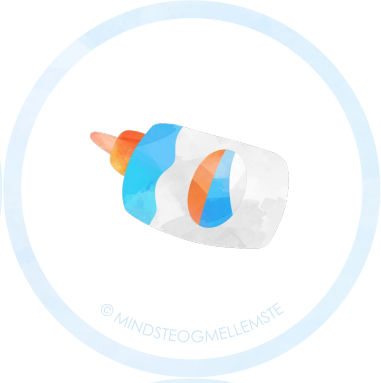
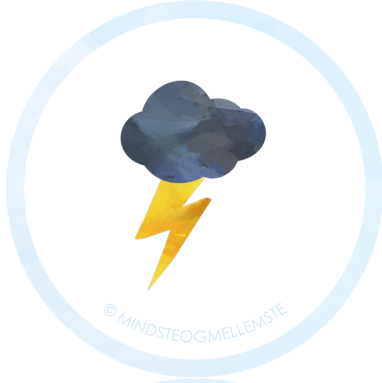


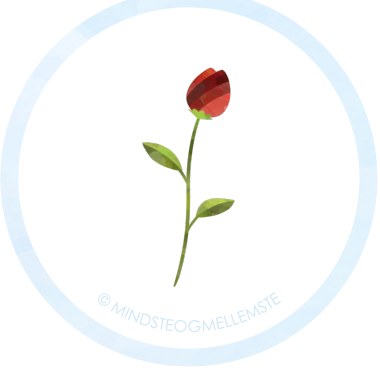
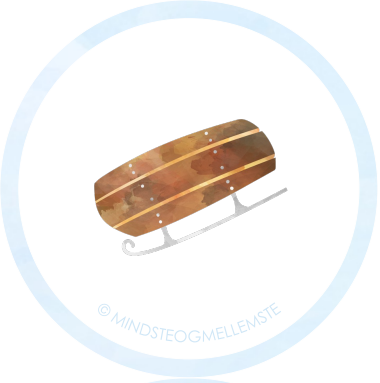
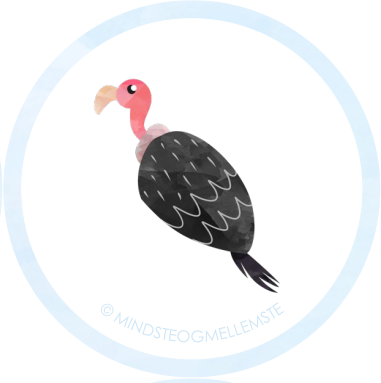
© MINDSTEOGMELLENSTE



© MINDSTEOGMELLENSTE









© MINDSTEOGMELLENSTE



© MINDSTEOGMELLENSTE



© MINDSTEOGMELLENSTE



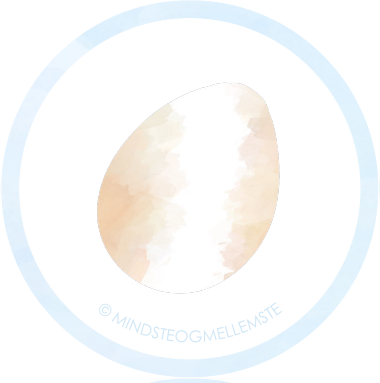
© MINDSTEOGMELLENSTE



© MINDSTEOGMELLENSTE



© MINDSTEOGMELLENSTE



© MINDSTEOGMELLENSTE



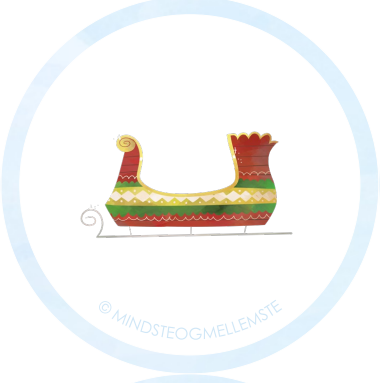
© MINDSTEOGMELLENSTE



© MINDSTEOGMELLENSTE



© MINDSTEOGMELLENSTE



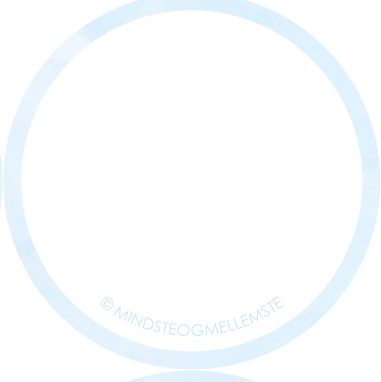
© MINDSTEOGMELLENSTE



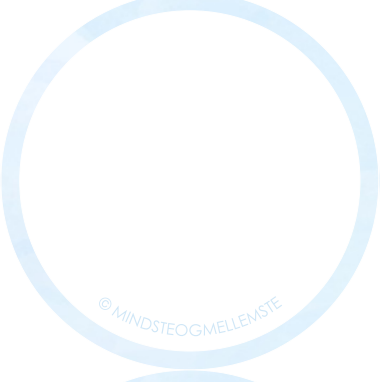
© MINDSTEOGMELLENSTE



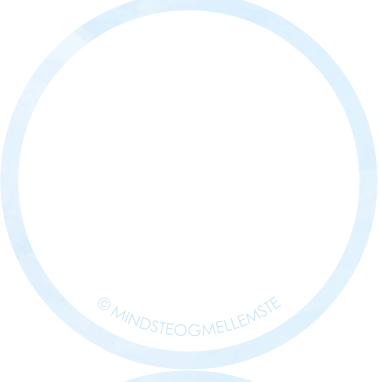
© MINDSTEOGMELLENSTE



© MINDSTEOGMELLENSTE



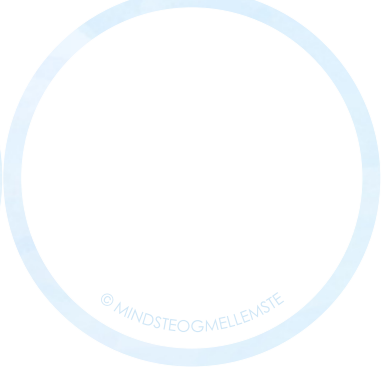
© MINDSTEOGMELLENSTE



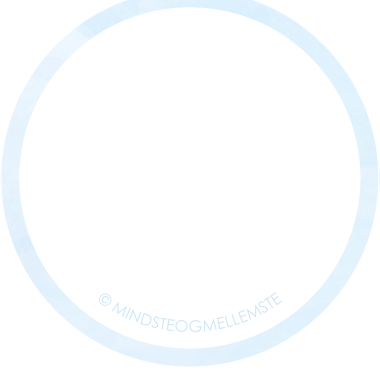
© MINDSTEOGMELLENSTE



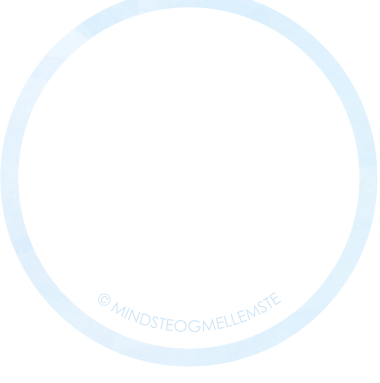
© MINDSTEOGMELLENSTE



© MINDSTEOGMELLENSTE



© MINDSTEOGMELLENSTE



© MINDSTEOGMELLENSTE



# ORDHUSE

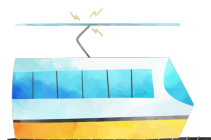
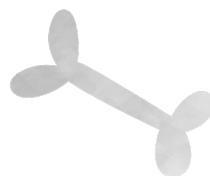
MED RIM



10

# ORDHUSE

MED RIM



# ORDHUSE

MED RIM



# ORDHUSE

MED RIM



# ORDHUSE

MED RIM



# ORDHUSE

LYDRETTE ORD (2 BOGSTAVER)



by

ko

is

ål

hø

ni

# ORDHUSE

LYDRETTE ORD (2 BOGSTAVER)



te

gå

bæ

fe

ø

ni

# ORDHUSE

LYDRETTE ORD (2 BOGSTAVER)



fe

by

ål

is

sø

ni

# ORDHUSE

LYDRETTE ORD (2 BOGSTAVER)



to

by

gå

ti

kø

fe

# ORDHUSE

LYDRETTE ORD (3 BOGSTAVER)



mus

lyn

lim

hus

bål

bus

# ORDHUSE

LYDRETTE ORD (3 BOGSTAVER)



lys

myg

vin

bøf

lås

nål

# ORDHUSE

LYDRETTE ORD (3 BOGSTAVER)



sæl

lus

sol

bil

lam

pæl

# ORDHUSE

LYDRETTE ORD (3 BOGSTAVER)



alf

kål

vat

nat

klo

blå

# ORDHUSE

MLYDRETTE ORD (4 BOGSTAVER)



skål

plus

fnug

grib

gris

brun

# ORDHUSE

LYDRETTE ORD (4 BOGSTAVER)



busk

mælk

kælk

mønt

skal

krus

# ORDHUSE

E I UDLYD

kane



løve

tube

vase

høne

sæbe

# ORDHUSE

E I UDLYD

hane



måne

have

pibe

pølse

rose

# ORDHUSE

E I UDLYD



abe

hule

gave

tavle

hue

flue