

VILKÅR FOR BRUG

Tusind tak fordi du downloadede dette materiale fra www.mindsteogmelleemste.dk. Jeg håber, du bliver glad for det.

Kopiering af materialet må kun finde sted på institutioner/virksomheder, som har indgået aftale med Copydan Tekst & Node og kun inden for de rammer, der er nævnt i aftalen. Du må ikke videresælge eller dele filen med andre – hverken helt eller delvist.

Har du spørgsmål eller feedback, er du velkommen til at kontakte mig på mindsteogmelleemste@gmail.com eller www.instagram.com/mindsteogmelleemste/

Venlig hilsen

Pernille

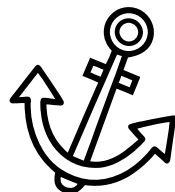
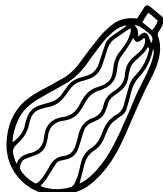
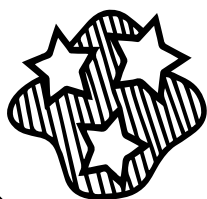
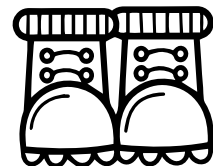
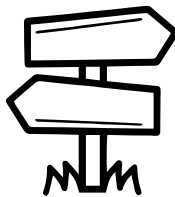
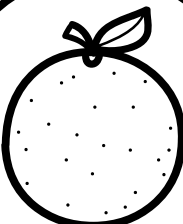
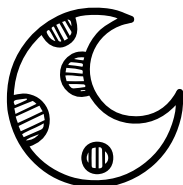
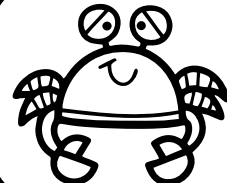
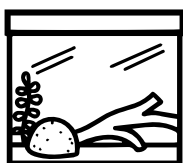
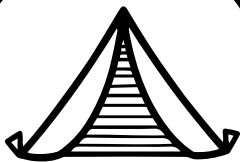
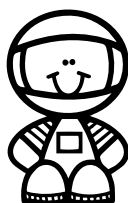
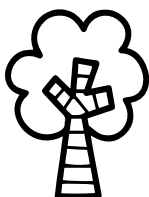
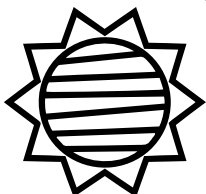
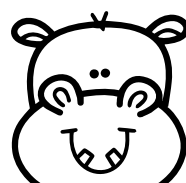
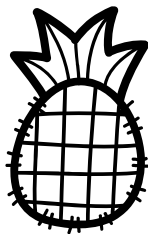
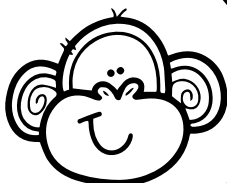
Materialet indeholder fonts/clipart er fra:



LYDLABYRINT

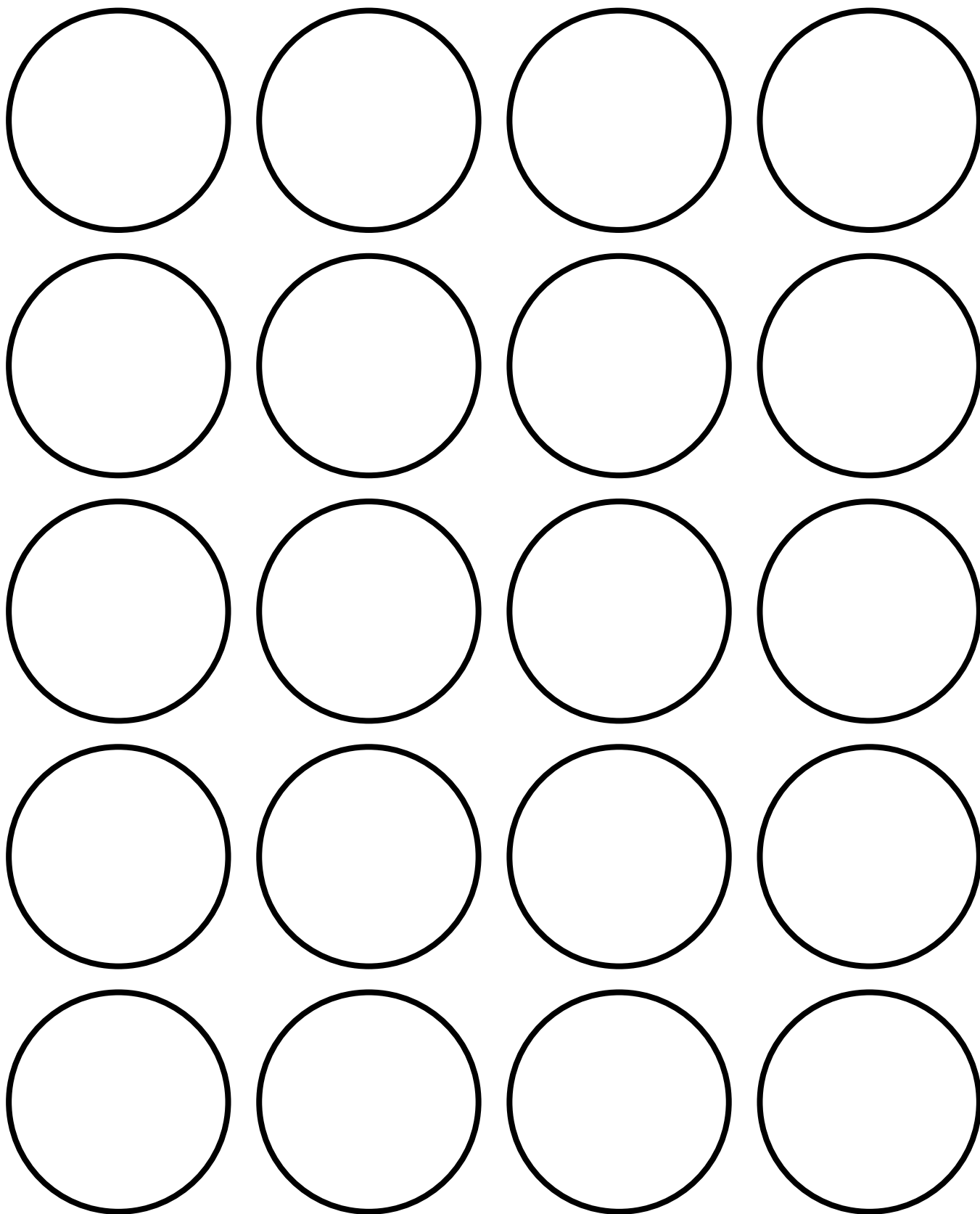
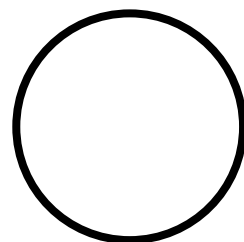
A

START



SLUT

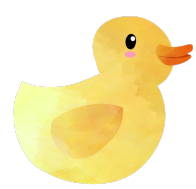
LYDLABYRINT



LYDLABYRINT



START

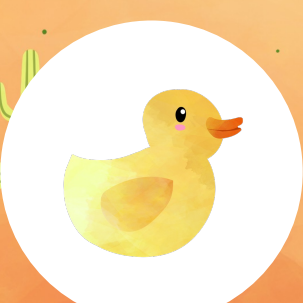


SLUT

LYDLABYRINT

A

START

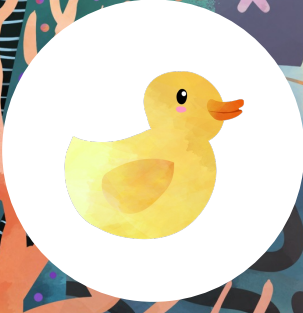


SLUT

LYDLABYRINT

A

START

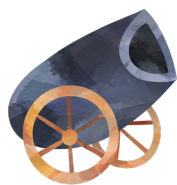


SLUT

LYDLABYRINT

B

START

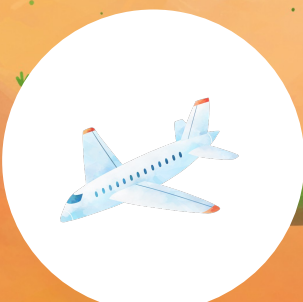


SLUT

LYDLABYRINT



START



SLUT

LYDLABYRINT

B



SLUT

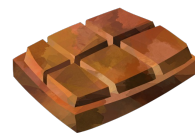
LYDLABYRINT



START



SLUT



LYDLABYRINT



START

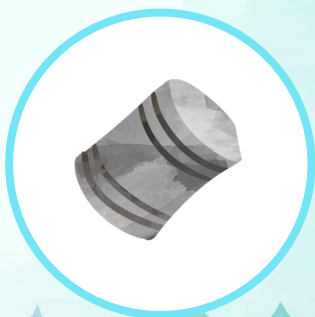


SLUT



LYDLABYRINT

D



SLUT



START



LYDLABYRINT



SLUT



START



LYDLABYRINT

D



START



SLUT



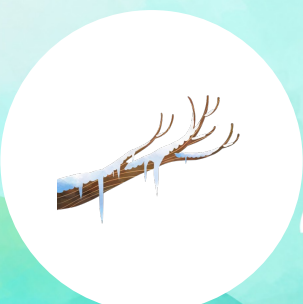
LYDLABYRINT



START



1



SLUT



LYDLABYRINT



START



1



SLUT



LYDLABYRINT

E

1



START



11



SLUT



LYDLABYRINT



START



SLUT



LYDLABYRINT



SLUT



START



LYDLABYRINT

F



START

SLUT



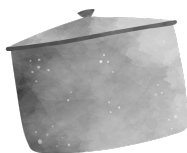
LYDLABYRINT



START



SLUT



LYDLABYRINT



START



SLUT

LYDLABYRINT

G

START



SLUT



LYDLABYRINT



START



SLUT



LYDLABYRINT



START



SLUT



LYDLABYRINT

H



START

SLUT



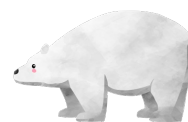
LYDLABYRINT



START



SLUT



LYDLABYRINT



START



SLUT

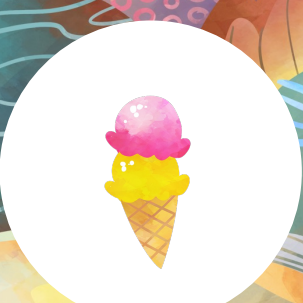


LYDLABYRINT



SLUT

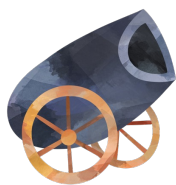
START



LYDLABYRINT



START



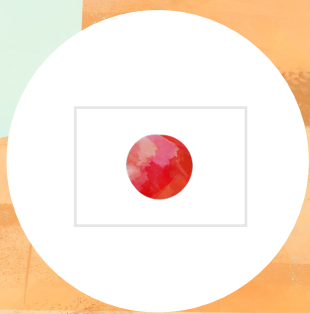
SLUT



LYDLABYRINT



SLUT



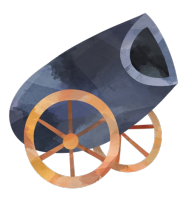
START



LYDLABYRINT

K

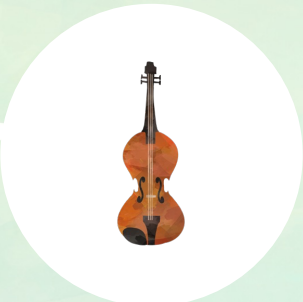
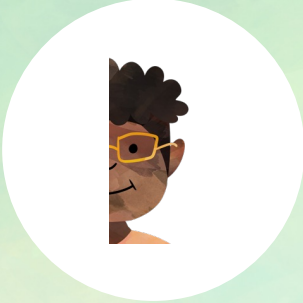
START



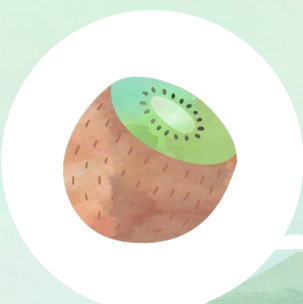
SLUT

LYDLABYRINT

K



SLUT



START

LYDLABYRINT

K



START

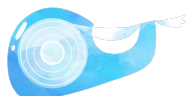


SLUT

LYDLABYRINT

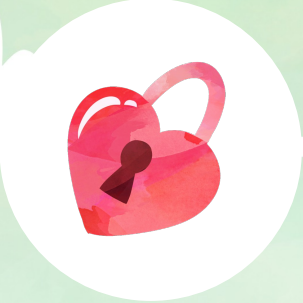


START

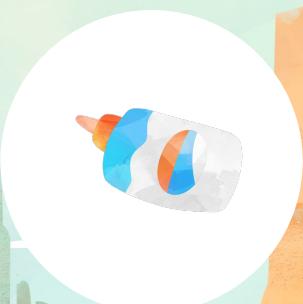


SLUT

LYDLABYRINT



SLUT



START

LYDLABYRINT



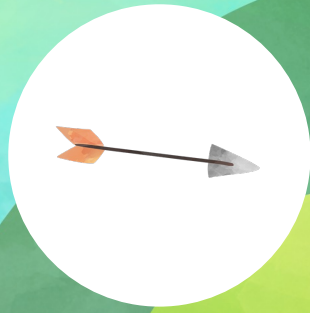
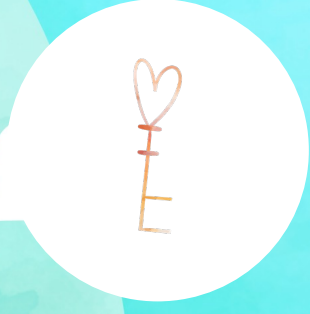
START



LYDLABYRINT



START



SLUT

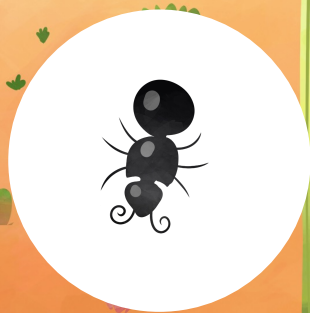
LYDLABYRINT



START



SLUT



LYDLABYRINT **M**



SLUT



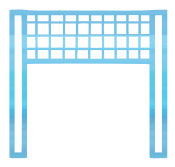
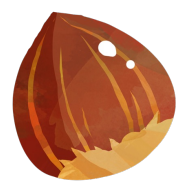
START



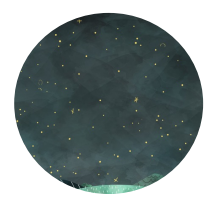
LYDLABYRINT

N

START



9



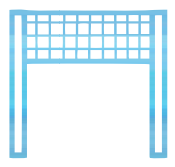
SLUT



LYDLABYRINT

N

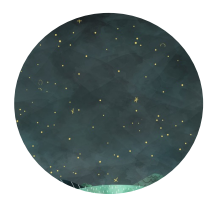
SLUT



9



START



0



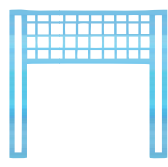
LYDLABYRINT

N

19



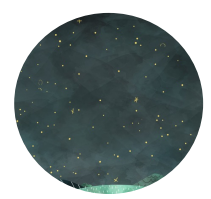
SLUT



9



START



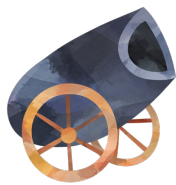
0



LYDLABYRINT



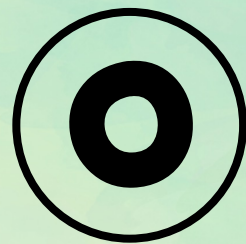
START



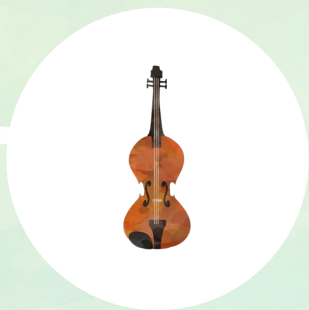
SLUT



LYDLABYRINT



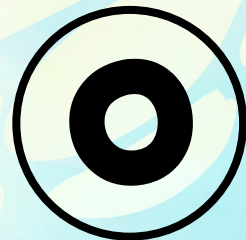
START



START



LYDLABYRINT



8



START



SLUT



OLIE



LYDLABYRINT

P

START



SLUT



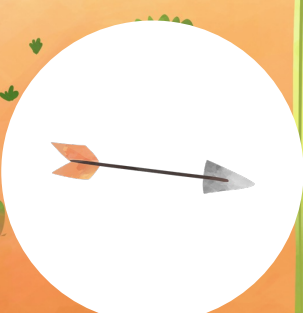
LYDLABYRINT



SLUT



START

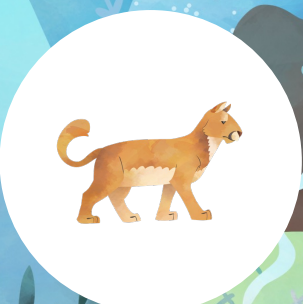


LYDLABYRINT

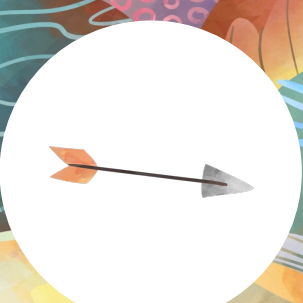
P



START



START



LYDLABYRINT



START



SLUT



LYDLABYRINT



SLUT



START



LYDLABYRINT

R



SLUT



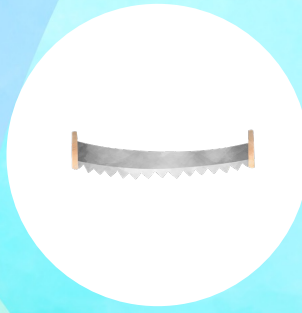
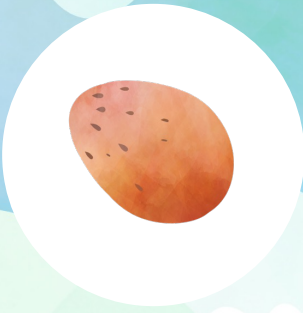
START



LYDLABYRINT



START



SLUT



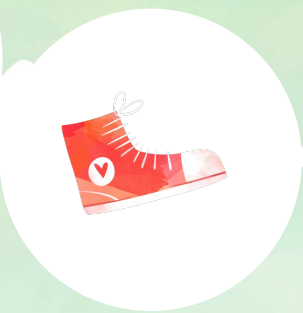
7



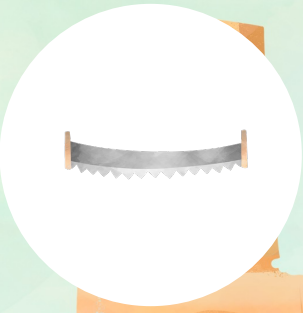
LYDLABYRINT



START



SLUT



7



LYDLABYRINT

S

START



SLUT



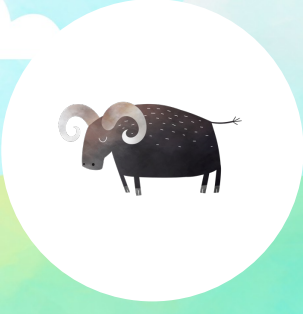
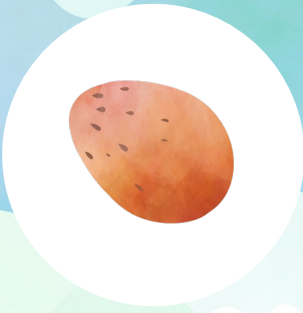
7



LYDLABYRINT



START



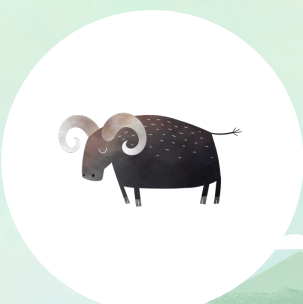
SLUT



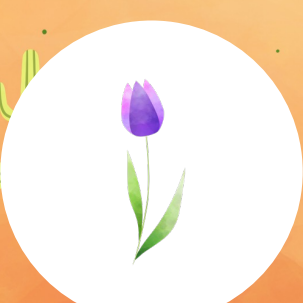
LYDLABYRINT



SLUT



START

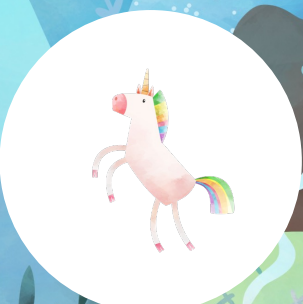


LYDLABYRINT

T



SLUT



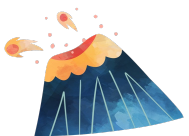
START



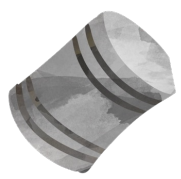
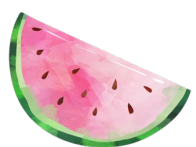
LYDLABYRINT

V

SLUT



START



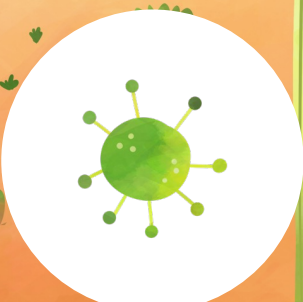
LYDLABYRINT



SLUT



START



LYDLABYRINT

V



START



SLUT

